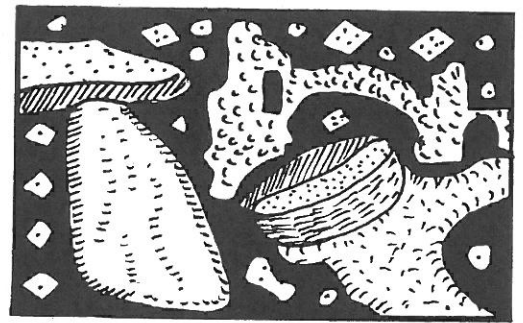
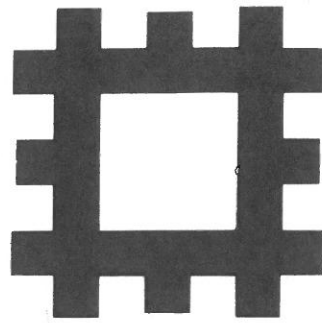
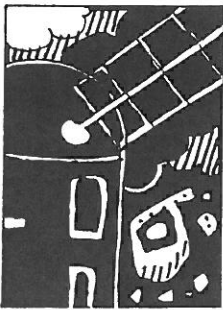
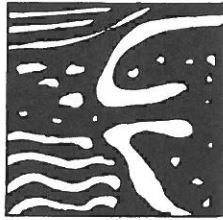


# REMNANTS



Journal of the  
English Heritage Education Service  
No. 19 Spring 1993

## Using English in the Historic Environment

This is the third in our series of articles on core subjects in the National Curriculum. It examines some of the many ways of using the historic environment as a resource for English. If you have colleagues who teach English and may not see this article why not photocopy it or loan it to them.

The historic environment is not limited to islands of the past floating in the everyday world. Glance out of any window and you will almost certainly be looking at evidence of the past. While those easily-identifiable sites, for instance, an abbey, a castle, a Roman site or prehistoric landscape, are an important element, they represent only a small part of the total. For children, everywhere belongs to the past as much as it does to their present. They may already be as familiar with a fifteenth century church as they are with a mid twentieth century shop or a Victorian housing estate. While all this potential waits to be explored, the



*Storytelling at Knowlton Church and Earthworks, Dorset.*

English Heritage

### INSIDE

**Artists' Interpretations of the Past  
Young Historian Award Winners**



## Educational Visit Bookings

From 1 April 1993 there will be new Regional office addresses for booking free educational visits to English Heritage Historic Properties in the Midlands, East Anglia, and the South East. Our existing offices in Wolverhampton, Cambridge and Tunbridge Wells will be closing, and application forms or any regional enquiry after that date should be sent to the new addresses below. As there have been a number of changes of address recently here is a complete up-to-date list.

### South West

English Heritage South West Regional Office  
7/8 King Street  
Bristol BS1 4EQ  
Tel. 0272-750700

For visits to sites in:

Avon, Berkshire, Cornwall, Devon, Dorset, Gloucestershire, Isles of Scilly, Oxfordshire, Somerset and Wiltshire.

### South East

English Heritage South East Regional Office

1 High Street  
Tonbridge

Kent TN9 1SG  
Tel. 0732-778000

For visits to sites in:

Hampshire (except Hurst Castle), Kent (except Dover, Deal and Walmer), Surrey, East and West Sussex.

### Isle of Wight (including Hurst Castle)

Osborne House State Apartments  
East Cowes  
Isle of Wight PO32 6JY  
Tel. 0983-200022

### Dover, Deal and Walmer Castles, Kent

English Heritage  
Dover Castle  
Kent CT16 1HH  
Tel. 0304-201628

### London

English Heritage Visitor Services Manager  
The Iveagh Bequest, Kenwood  
Hampstead Lane  
London NW3 7JR  
Tel. 081-348 1286/7  
For visits to sites in: Greater London.

### Midlands

English Heritage Midlands Regional Office  
Hazelrigg House  
33 Marefair  
Northampton NN1 1SR  
Tel. 0604-730320

For visits to sites in:

Bedfordshire, Buckinghamshire, Cambridgeshire, Derbyshire, Essex, Hereford and Worcester, Hertfordshire, Leicestershire, Lincolnshire, Norfolk, Northamptonshire, Nottinghamshire,

Shropshire, Staffordshire, Suffolk, Warwickshire, West Midlands.

### North

English Heritage North Regional Office

Bessie Surtees House  
41-44 Sandhill  
Newcastle upon Tyne NE1 3JF  
Tel. 091-261 1585

For visits to sites in: Cheshire, Cleveland, Cumbria, Durham, Greater Manchester, Humberside, Lancashire, Merseyside, Northumberland, Tyne and Wear, Yorkshire North, South and West.

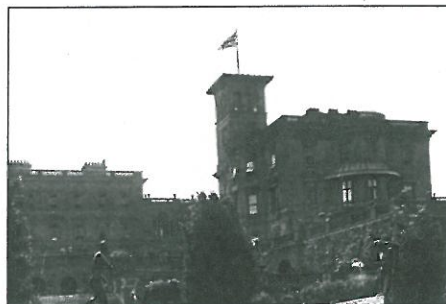
**For a complete list of all English Heritage Historic Properties and further details of our Free Educational Visits Scheme write to us for your free copy of the Information for Teachers booklet.**



### National Archaeology Day

National Archaeology Day 1993, organised by the Young Archaeologists Club, will be from Saturday 28 to Sunday 29 August, providing a choice of opening days or a whole weekend of activities throughout Great Britain. The aim is for young people and their families to visit a site of archaeological or historic interest to see archaeology in action and take part in activities on site. Venues may include excavations, historic monuments, museums and resource centres.

For further details write to: Geoffrey Cole, The Archaeology Centre, 4/10 London Road, Bagshot, Surrey, GU19 5HN.



### Visits to Osborne House

There are new guidelines available for schools wishing to visit Osborne House on the Isle of Wight. If you are planning a visit please write for your copy of the guidelines to:

The Head Custodian  
Osborne House  
East Cowes  
Isle of Wight  
PO32 6JY  
Tel. 0983-200022



We are pleased to announce that this issue of Remnants has been printed on recycled paper and that English Heritage Education Service publications from now on will be published on recycled paper.

Schools can make a free educational visit to any English Heritage Historic Property provided this is pre-booked through the relevant regional office at least two weeks in advance. Teachers can also arrange a free exploratory visit beforehand to prepare ideas for the main visit later. The Education Service aims to provide teachers with as much help as possible to use the resource of the historic environment. If you have any requests for further information please contact us at:

**English Heritage  
Education Service  
Keysign House  
429 Oxford Street  
London W1R 2HD  
Tel 071-973 3442/3  
Fax 071-973 3430**

REMNANTS, The Journal of the English Heritage Education Service, is edited by Mike Corbishley (Head of Education) and Ken Glen (Education Administrator). Text copyright is of individual contributors. Designed by Alan McPherson. Printed in England by Hythe Offset Ltd. ISSN 0269-9656  
© English Heritage 1993.